

FLOOR 19 MULTI-TENANT

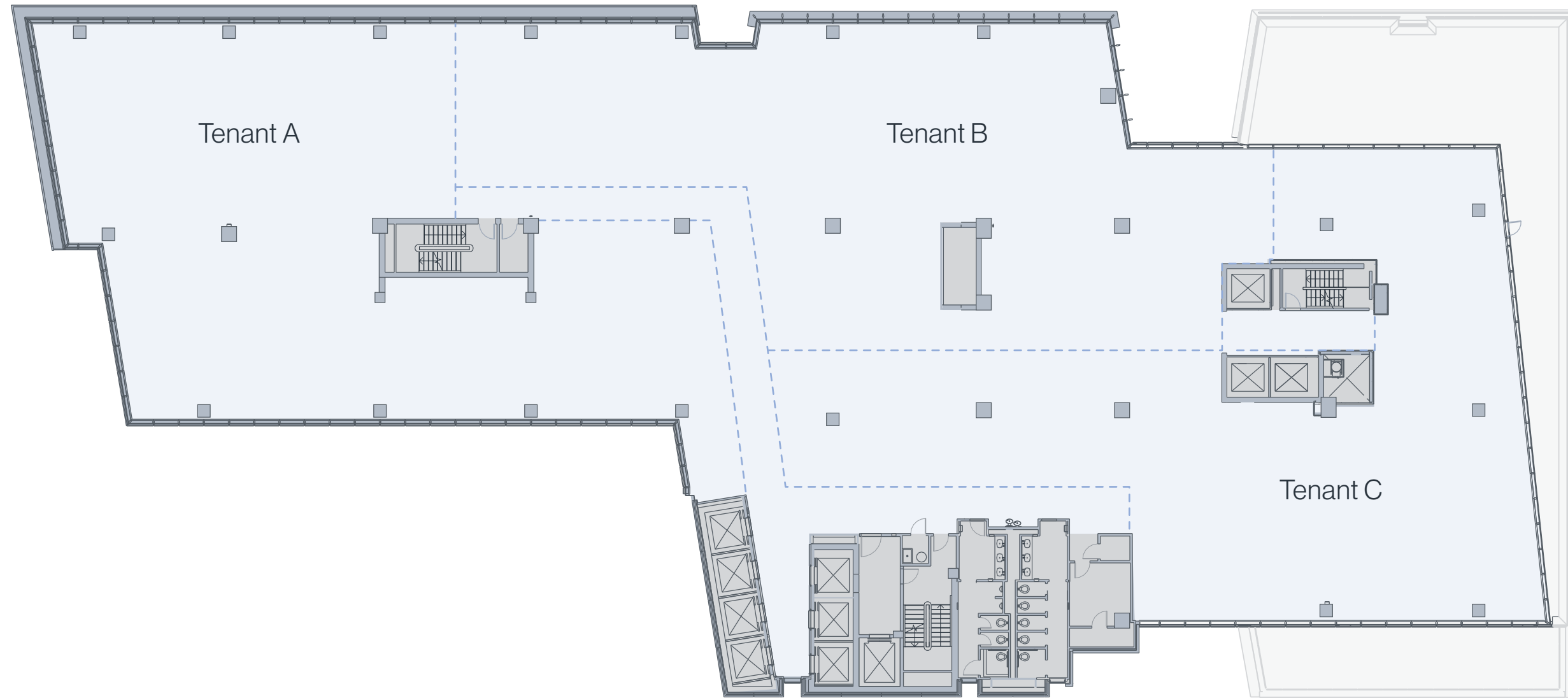
29,080 RSF

Uninterrupted space

30'x35' - 30'x40' typical column spacing

Side core design

maximizes efficiency (19.69% multi-tenant core factor)



CONTACT US

7373 WISCONSIN AVENUE, BETHESDA, MD 20814

Keith Foery

301.896.9028
keith.foery@
transwestern.com

Phil McCarthy

301.896.9011
keith.foery@
transwestern.com

Mark Boyce

301.896.9090
keith.foery@
transwestern.com

Karla Rivera

301.896.9016
keith.foery@
transwestern.com

Chris Coccaro

301.896.9003
keith.foery@
transwestern.com

BEACON
CAPITAL PARTNERS

STONEBRIDGE

TRANSWESTERN