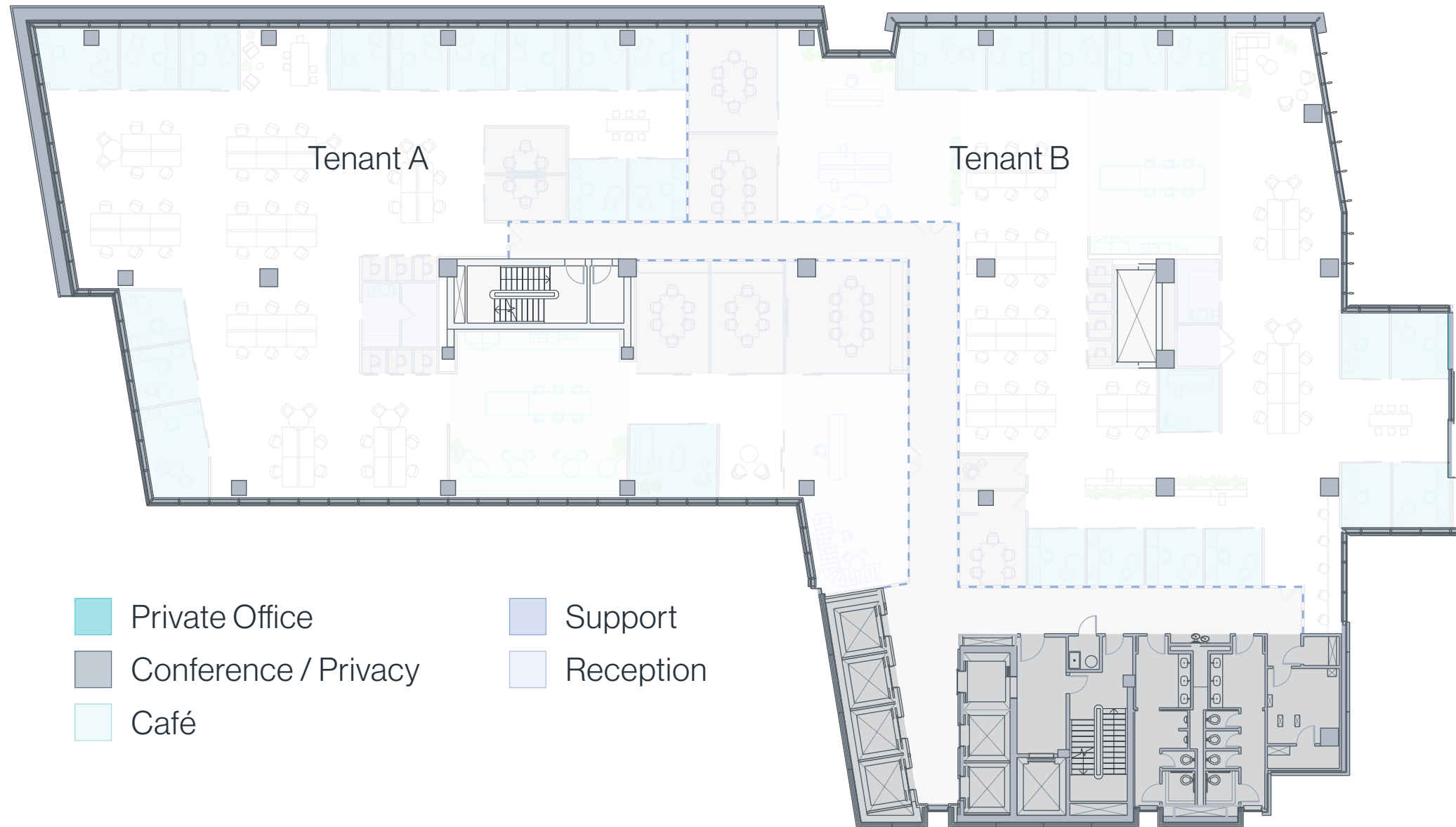


**FLOORS 10 - 14 MULTI-TENANT TEST FIT  
HYBRID**

23,128<sup>RSF</sup>

**Tenant A**  
Office 14  
Open Work Area 40  
**Assignable seats 54**

**Tenant B**  
Office 13  
Open Work Area 37  
**Assignable seats 50**



**CONTACT US**

**7373 WISCONSIN AVENUE, BETHESDA, MD 20814**

**Keith Foery**

301.896.9028  
keith.foery@  
transwestern.com

**Phil McCarthy**

301.896.9011  
phil.mccarthy@  
transwestern.com

**Mark Boyce**

301.896.9090  
mark.boyce@  
transwestern.com

**Karla Rivera**

301.896.9016  
karla.rivera@  
transwestern.com

